

Aquark Technology Limited

Web: www.aquark.com

Tel: +86 20 3781 4693

Mail: sales@aquark.com

Address: Keyuan Two Road, Gaoli Development Zone, Ronggui Shunde District, Foshan, P.R.China 528306

AQUARK

INVERPAD TURBO

MR. OASIS





INVERPAD[®] TURBO

Revolutionary Innovation, Best & Better Breakthrough

Developed in 2022, the InverPad[®] Turbo revolutionized pool heating with silent and powerful performance. Its unique Pad design, groundbreaking Turbofan, and stepless DC inverter technology earned the Guinness World Record for the "Quietest Pool Heat Pump".

To bring customers the ultimate experience, Aquark has created the upgraded Mr. Oasis. By combining InverPad[®] Turbo with next-gen R290 refrigerant, it achieves an industry-leading COP up to 20, provides ≈ 0 GWP, keeps 20X silence, and realizes effortless 4-season swimming for families.

COP UP TO 20

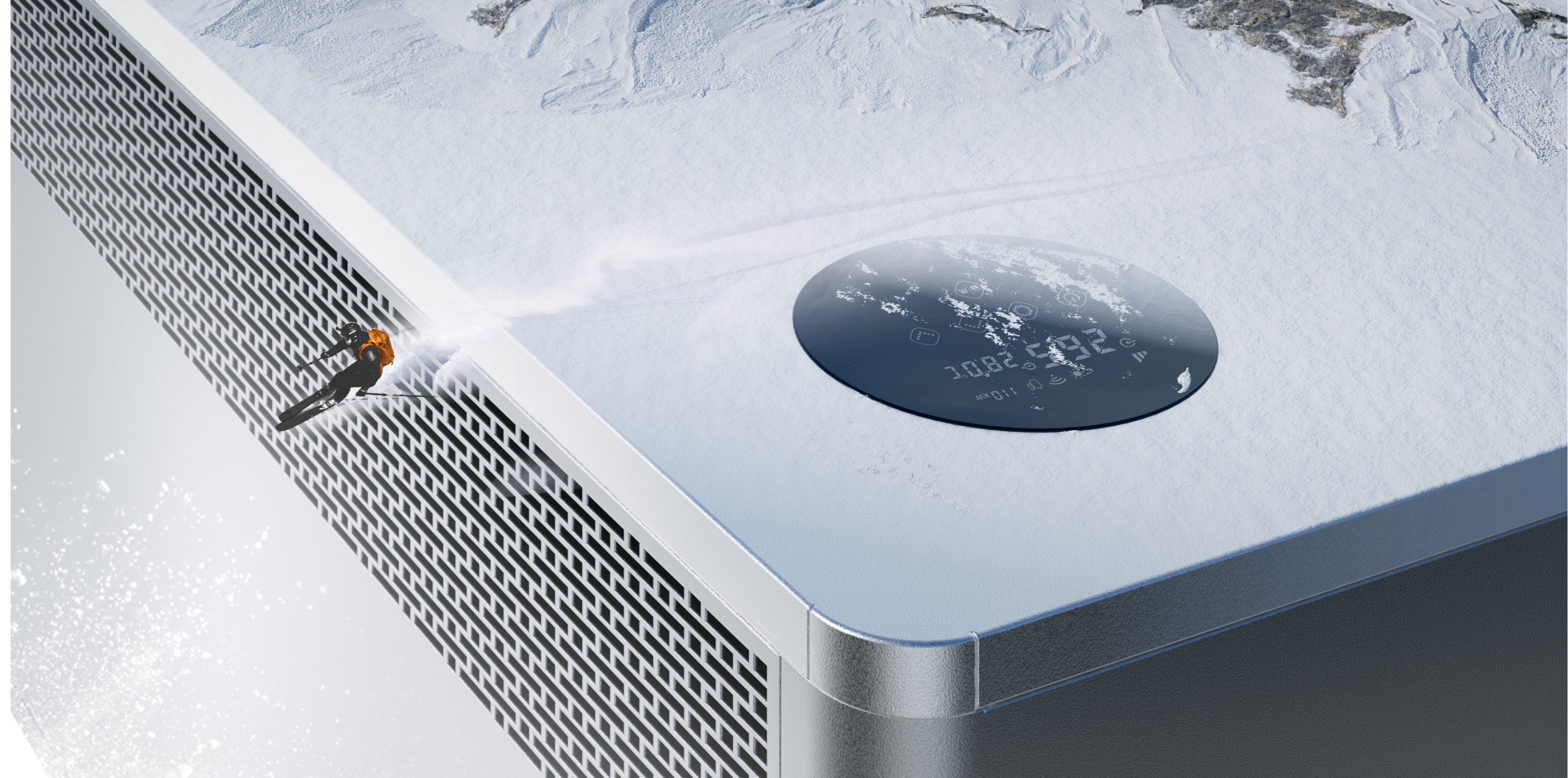
20X Saving, leading the trend

Based on InverPad® Turbo Tech, Mr. Oasis has remarkable systematic optimization which boost COP up to 20. Perfectly matching of compressor, motor and EEV for higher efficiency, 1kW electricity brings a maximum 20kW heat output in return, providing average 95% free energy from ambient air.



AIR OPERATION -15°C

Enjoy 4-season swimming with Mr. Oasis. With an improved inverter control system, Mr. Oasis will smartly adjust EVO reverse cycle defrosting to ensure maximized heat output, contributes biggest efficiency under harshest condition





20X SILENCE 38.1 dB(A)



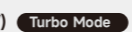

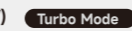




Powered by InverPad Turbo Tech, Mr. Oasis works at a very low speed when maintaining the temperature, reducing the noise level to around 38.1 dB(A) at 1 m, providing an escape from life's chaos. Enjoy lounge poolside, immersed in nature's real sounds

OTHER FEATURES

-  -15°C~43°C
-  Built-in WiFi
-  Aluminum-alloy casing
-  Twin-rotary DC inverter compressor
-  EVO reverse cycle defrosting



Parameters of Mr. Oasis

		MORC110	MORC130	MORC150	MORC190	MORC240	MORC270	MORC350	MORC350s	
 Features	Technology	InverPad® Turbo								
	Operating air temperature (°C)	-15°C-43°C								
	Gas	R290								
	Advised pool volume (m ³) *	20-35	30-45	30-55	40-65	50-80	55-85	65-110	65-110	
 Performance	Air 27°C / Water 27°C / Humidity 80%									
	Heating capacity (kW) 	10.8	13.0	15.2	19.3	24.0	27.0	34.5	34.5	
	Heating capacity (kW) 	8.3	10.0	12.2	14.6	18.8	20.5	26.5	26.5	
	COP range	17.0-7.2	17.2-7.1	17.2-7.2	20.0-7.4	17.1-7.3	17.3-7.2	16.8-7.1	16.6-7.1	
	Average COP at 50% Speed	11.8	11.7	11.8	14.4	12.9	12.8	12.8	12.4	
	Air 15°C / Water 26°C / Humidity 70%									
	Heating capacity (kW) 	7.3	8.8	10.6	13.2	16.5	18.5	23.5	23.5	
	Heating capacity (kW) 	5.6	6.8	8.0	10.2	12.7	14.1	18.0	18.0	
COP range	7.4-5.1	7.6-5.3	7.5-5.2	8.1-5.3	7.9-5.2	7.8-5.1	7.9-5.0	7.8-4.9		
Average COP at 50% Speed	6.6	6.8	6.7	7.0	6.9	6.8	6.8	6.7		
 Components	Compressor	Twin-rotary DC Inverter Compressor								
	Casing	Aluminum-alloy Casing								
	Fan Motor	Turbo Fan								
	Heat exchanger	Twisted Titanium Heat Exchanger								
	Power supply	220-240V~/1Ph /50Hz							380-415V 3N~50Hz	
 Sound	Sound level at 1m dB(A)	36.3-45.0	36.4-45.5	36.3-46.9	39.2-47.5	39.6-50.7	39.7-51.2	40.2-52.0	40.5-52.5	
	Sound level by 50% speed 1m dB(A)	38.1	38.2	40.1	42.0	42.8	43.0	44.9	45.3	
	Sound level at 10m dB(A)	16.3-25.0	16.4-25.5	16.3-26.9	19.2-27.5	19.6-30.7	19.7-31.2	20.2-32.0	20.5-32.5	
 Others	Rated input power (kW)	0.20-1.70	0.24-1.98	0.29-2.43	0.36-2.96	0.45-3.78	0.52-4.32	0.67-5.60	0.68-5.66	
	Input power at 50% Speed (kW)	0.56	0.65	0.79	0.94	1.20	1.37	1.73	1.76	
	Rated input current (A)	0.87-7.39	1.04-8.61	1.26-10.57	1.57-12.87	1.96-16.43	2.26-18.78	2.91-24.35	0.99-8.20	
	Advised water flux (m ³ /h)	2-4	2-4	3-4	4-6	6-9	8-10	10-12	10-12	
	Water connection (mm)	50mm/48.3mm								

Remarks: The data above is only for reference. For specific data, please refer to the nameplate on the unit.
* Advised pool volume applies to a private pool with isothermal cover, from April to September.

